



# MIXO TWO - Housing inserts assembly

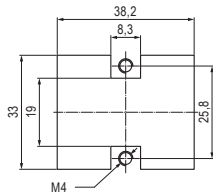
	Suitable inserts	Rated current (A)	Rated voltage (V)	Rated impulse voltage (kV)
▲	CX 01 GF/M *	100	500	6
▲	CX 02 7F/M **	70	690	6
▲	CX 02 4AF/M	40	690	6
▲	CX 02 4BF/M	40	690	6
▲	CX 02 4F/M	40	690	6
	CX 03 4F/M	40	400 / 690	6
	CX 03 4BF/M	40	500	6
▲	CX 3/4 XDF/M	40 / 10	690	6
▲	CX 04 XF/M	40	690	6
	CX 05 SF/M	16	400	6
	CX 05 SHF/M	16	400	6
	CX 06 CF/M	16	500	6
	CX 06P CF/M	16	690	6
	CX 06 CYF/M	16	500	6
	CX 08 CYF/M	16	400	6
	CX 12 DF/M	10	250	4
	CX 12 DYF/M	10	250	4
	CX 17 DF/M	10	160	2,5
	CX 01 9VF/M	5	50	0,8
	CX 01 9VTF	5	50	0,8
	CX 01 9VF2/M2	5	50	0,8
	CX 08 I6F/M	5	50	0,8
	CX 08 I6GF/M	5	50	0,8
	CX 25 IBF/M	4	50	0,8
	CX 36 IF/M	4	32	0,8
	CX 20S IF/M	4	32	0,8
	CX 20S IGF/M	4	32	0,8
	CX 04 RF/M	—	—	0,8
	CX 01 J8AIF/BIF/PIF	1	50	0,8
	CX 01 J8F/M/IM	—	—	0,8
	CX 01 J8UM	—	—	0,8
	CX 04 LF/M	—	—	—
	CX 04 SCF/M	—	—	—
	CX 03 MP	—	—	—
	CX 03 P	—	—	—
	CX 02 P	—	—	—
	CX FM	—	—	—

▲ Reduced rated voltage and rated impulse voltage.

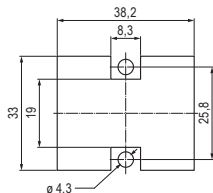
\* When used with **CGFA/MA** contacts of size >10 (i.e., 16, 25, 35) not for an ELV (extra-low voltage) application – that would not need PE – a PE adapter **CGT 16** is required to connect the PE conductor sized 16 mm<sup>2</sup> /AWG 6 to the 10 mm<sup>2</sup> /AWG 8 PE terminal of MIXO TWO frame.

\*\* When used with **CX7FA/MA** contacts of size > 10 (i.e., 16, 25) not for an ELV (extra-low voltage) application – that would not need PE – a PE adapter **CGT 16** is required to connect the PE conductor sized 16 mm<sup>2</sup> /AWG 6 to the 10 mm<sup>2</sup> /AWG 8 PE terminal of MIXO TWO frame.

Panel cut-out, threaded panel

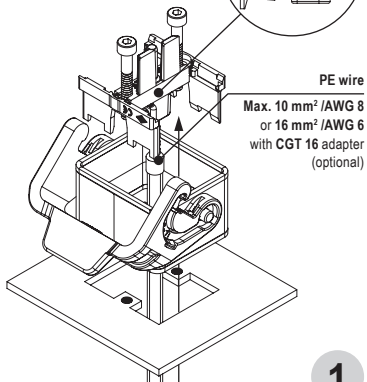
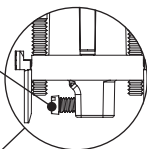


Panel cut-out, through-hole panel (max. panel thickness: 6 mm)



Tightening torque 1,2 Nm  
10.6 lb.in

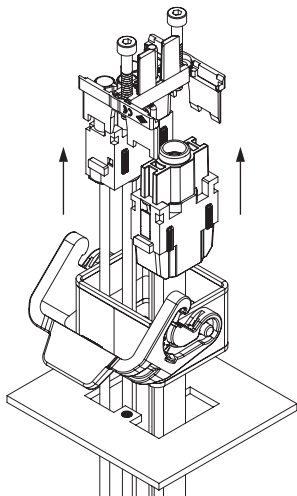
Ph1 or 1,0 × 5,5



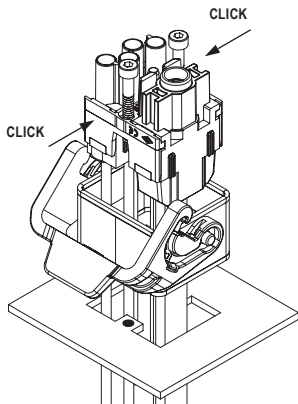
PE wire

Max. 10 mm<sup>2</sup> /AWG 8  
or 16 mm<sup>2</sup> /AWG 6  
with CGT 16 adapter  
(optional)

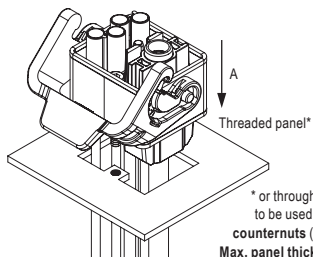
1



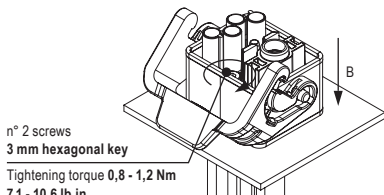
2



3



\* or through-holes panel  
to be used with n° 2 M4  
counternuts (not supplied)  
Max. panel thickness: 6 mm



n° 2 screws  
3 mm hexagonal key

Tightening torque 0,8 - 1,2 Nm  
7.1 - 10.6 lb.in

4